

**protect your values**

# PYRO-SAFE FLAMMOTECT-A Joint sealing

## Installation instructions

Linear joint sealing and fire barrier made of e. g. mineral fibre boards and an ablative coating for horizontal and vertical joints between solid walls and floors.

Fire resistance class maximum EI 120 compliant with EN 13501-2 in accordance with ETA-18/0237



Subject to errors, misprints and modifications. All information corresponds to state-of-the-art technology and the version of standards applicable at the time of printing (06/2018).  
On request, we would be happy to inform you about the legal and technical framework or the manufacturer's specifications applicable in your individual case. © Copyright svt Group, Seevetal.  
PYRO-SAFE is a registered trademark © of the svt Group, Seevetal.

# PYRO-SAFE FLAMMOTECT-A Joint sealing

## Table of contents

Topic	Page
<b>1. Preliminary remarks / Overview</b>	<b>3 - 4</b>
1.1 Target group, Use of the instructions, safety information	3
1.2 Structural elements	4
<b>2. Scope</b>	<b>4</b>
<b>3. Used products</b>	<b>5</b>
<b>4. Regulations and variants</b>	<b>6 - 11</b>
4.1 Application with mineral fibre boards (double-layer)	7
4.2 Application with mineral fibre boards (single-layer)	8
4.3 Application with lamella mat	9
4.4 Application with mineral wool	10
4.5 Application with fire protection filler	11
<b>5. Installation steps – mineral fibre boards</b>	<b>12</b>
<b>6. Installation steps – lamella mat</b>	<b>13</b>
<b>7. Installation steps – mineral wool</b>	<b>14</b>
<b>8. Installation steps – fire protection filler</b>	<b>15</b>
<b>Declaration of Performance</b>	<b>16</b>

Subject to errors, misprints and modifications. All information corresponds to state-of-the-art technology and the version of standards applicable at the time of printing (06/2018).  
On request, we would be happy to inform you about the legal and technical framework or the manufacturer's specifications applicable in your individual case. © Copyright svt Group, Seevetal.  
PYRO-SAFE is a registered trademark © of the svt Group, Seevetal.

## PYRO-SAFE FLAMMOTECT-A Joint sealing

### 1. Preliminary remarks / Overview

#### 1.1 Target group

- The installation instructions are intended solely for personnel trained in fire protection.

#### 1.1 Use of the instructions

- Read through these installation instructions entirety before beginning work. Pay particular attention to the following safety instructions.
- The authorisation holder assumes no liability for damage caused by failure to comply with these instructions.
- Figures appear as examples only. Your installation results may differ in appearance.

#### 1.1 Safety instructions



Refer to the safety data sheets when processing the fire protection compounds.

##### Personal protective equipment:



In case of short-term or low-level exposure: P2 particle filter.  
In case of intensive or long-term exposure: use self-contained breathing apparatus.  
Only use respirators that comply with international/national standards.



Hand protection  
Use chemicals-resistant protective gloves.  
Recommended material: butyl rubber, nitrile rubber, fluoro rubber, PVC



Eye protection  
Use protective goggles, wrap-around glasses.



Body protection  
Wear industrial protective clothing and non-slip shoes.



Safety instructions for the installation of floor penetration seals:

- The area below the floor penetration seal must be cordoned off while work on the penetration seal is underway (warning tape, or sign: danger - falling objects; keep off this area; sealing work underway in the floor above!

## PYRO-SAFE FLAMMOTECT-A Joint sealing

### 1.2 Structural elements

#### Solid floors

made of concrete, reinforced concrete or aerated concrete minimum with the necessary fire resistance class in accordance with EN 13501-2.

#### Solid walls

made of masonry, concrete, reinforced concrete or aerated concrete minimum with the necessary fire resistance class in accordance with EN 13501-2.

## 2. Anwendungsbereich

PYRO-SAFE FLAMMOTECT-A Joint sealing is assessed and evaluated in accordance with EAD 350141-00-1106 regarding the features „Reaction to fire“, „fire resistance“, „release of dangerous substances“ and „durability and serviceability“.

#### Reaction to fire

The ablative component „PYRO-SAFE FLAMMOTECT-A“ is classified as E in accordance with EN 13501-1; the mineral fibre boards „ProRox SL 970D“, the loose mineral wool „ProRox LF 970“ and the lamella mat „Klimarock“ are classified as A1 in accordance with EN 13501-1.

#### Fire resistance

In accordance with EN 13501-2 PYRO-SAFE FLAMMOTECT-A Joint sealing complies with requirements of max class

- EI 120:
- Joint sealing with mineral fibre boards (double-layer) in walls and floors
  - Joint sealing with lamella mat in walls and floors
  - Joint sealing with loose mineral wool in floors
  - Joint sealing with fire protection filler in walls and floors

EI 60/E 120: - Joint sealing with mineral fibre boards (single-layer) in floors

#### Release of dangerous substances

The ablative component „PYRO-SAFE FLAMMOTECT-A“ does not contain any substances identified as dangerous in the list of the European Commission. The mineral fibre board „ProRox SL 970D“, the loose mineral wool „ProRox LF 970“ and the lamella mat „Klimarock“ do not contain any dangerous substances listed in Directive 67/548/EC or Regulation (EC) No. 1272/2008 or the Indicative List on Dangerous Substances.

#### Durability and serviceability


The ablative component „PYRO-SAFE FLAMMOTECT-A“ fulfills the type X in accordance with EAD 350141-00-1106.


PYRO-SAFE FLAMMOTECT-A can be subjected to the conditions of inside rooms with and without exposure to moisture or atmospheric conditions, without substantial changes to the fire protection characteristics being expected.


## PYRO-SAFE FLAMMOTECT-A Joint sealing

### 3. Used products


	<p><b>PYRO-SAFE FLAMMOTECT-A Coating</b></p> <p>in accordance with ETA-14/0418</p> <p>12.5 kg pail – <b>Product No. 01155101</b></p>
---	--


	<p><b>PYRO-SAFE FLAMMOTECT-A Solid emulsion</b></p> <p>in accordance with ETA-14/0418</p> <p>12.5 kg pail – <b>Product No. 01155106</b></p>
---	---

	<p><b>PYRO-SAFE FLAMMOTECT-A Fille</b></p> <p>in accordance with ETA-14/0418</p> <p>12.5 kg pail – <b>Product No. 01155104</b></p>
--	--


	<p><b>PYRO-SAFE FLAMMOTECT-A Filler</b></p> <p>in accordance with ETA-14/0418</p> <p>310 ml cartridge – <b>Product No. 01155115</b></p>
---	---

	<p><b>Mineralfaserplatte gemäß EN 14303 „ProRox SL 970D“</b></p> <p>Classified as A1 according to EN 13501-1</p> <p>Dimensions 1000 x 625 x 50 mm</p>
---	---

	<p><b>Mineral wool „ProRox LF 970“</b></p> <p>or equivalent with the following characteristics:</p> <p>Classified as A1 according to EN 13501-1</p> <p>Melting point <math>\geq 1000</math> °C</p> <p>Bag à 10 kg – <b>Product No. 01183000</b></p>
--	---

	<p><b>Lamella mat „KLIMAROCK“</b></p> <p>in accordance with abZ Z-23.14-1115</p> <p>Classified as A2-s1 d0 according to EN 13501-1</p> <p>Melting point <math>\geq 1000</math> °C,</p> <p>Density 40-50 kg/m<sup>3</sup></p> <p>Thickness 20 mm - 100 mm</p> <p>e.g. roll à 3,05 m<sup>2</sup>, thickness 30 mm</p> <p><b>Product No. 01187100</b></p>
--	--

	<p><b>Label</b></p> <p><b>Product No. 01229000</b></p>
--	--

	<p><b>Recommended tools</b></p> <ul style="list-style-type: none"> <li>• Filler, brush, masking tape</li> <li>• Mineral-wool knife and saw</li> <li>• If required: plastic film, folding ladder</li> </ul>
--	--

Subject to errors, misprints and modifications. All information corresponds to state-of-the-art technology and the version of standards applicable at the time of printing (06/2018).  
 On request, we would be happy to inform you about the legal and technical framework or the manufacturer's specifications applicable in your individual case. © Copyright svt Group, Seevetal.  
 PYRO-SAFE is a registered trademark © of the svt Group, Seevetal.

# PYRO-SAFE FLAMMOTECT-A Joint sealing

## 4. Regulations and variants

- Before installation it must be ensured that the type, thickness and fire resistance class of the separating structural elements and the joint widths do comply with ETA-18/0237.
- All foreign materials, such as loose parts of the structural elements, residues of expanding foam, dirt and other loose materials, must be completely removed from the joints.
- The application is possible for linear joint or gap sealings with movement capability less than 7.5 %

Variants						
Application with	Thickness of the structural element [mm]		Max. joint width [mm]	Min. joint depth [mm]	Fire resistance class	
	Wall	Floor			Wall	Floor
Mineral fibre boards (double-layer)	≥ 150		≤ 200	100	EI 120	EI 120
Mineral fibre boards (single-layer)	-	≥ 150	≤ 200	50	-	EI 60 / E 120
Lamella mat	≥ 100	≥ 150	≤ 100	≥ 90	EI 120	EI 120
Loose mineral wool	-	≥ 150	≤ 20	≥ 75	-	EI 120
Fire protection filler	≥ 100	≥ 150	≤ 4	≥ 8	EI 120	EI 120

Subject to errors, misprints and modifications. All information corresponds to state-of-the-art technology and the version of standards applicable at the time of printing (06/2018).  
 On request, we would be happy to inform you about the legal and technical framework or the manufacturer's specifications applicable in your individual case. © Copyright svt Group, Seevetal.  
 PYRO-SAFE is a registered trademark of the svt Group, Seevetal.

# PYRO-SAFE FLAMMOTECT-A Joint sealing

## 4.1 Application with mineral fibre boards – double-layer: EI 120

- The maximum joint width is  $\leq 200$  mm.
- As shown below, the mineral fibre boards (2x thickness  $\geq 50$  mm) can be installed in the middle, upper/left or lower/right seal edge.
- Joints can take place horizontally and vertically between walls, floors or between walls and floors.
- The mineral fibre boards have to be glued in the structural element with PYRO-SAFE FLAMMOTECT-A, any remaining gaps shall be closed with loose mineral wool.
- The outer edges of the mineral fibre boards shall be coated with PYRO-SAFE FLAMMOTECT-A (dry film thickness  $\geq 1$  mm).

**Application in walls**

Wall-/Floor-, seal thickness and implementation variants see page 6

Dimension specifications in mm

**Application in floors**

Wall-/Floor-, seal thickness and implementation variants see page 6

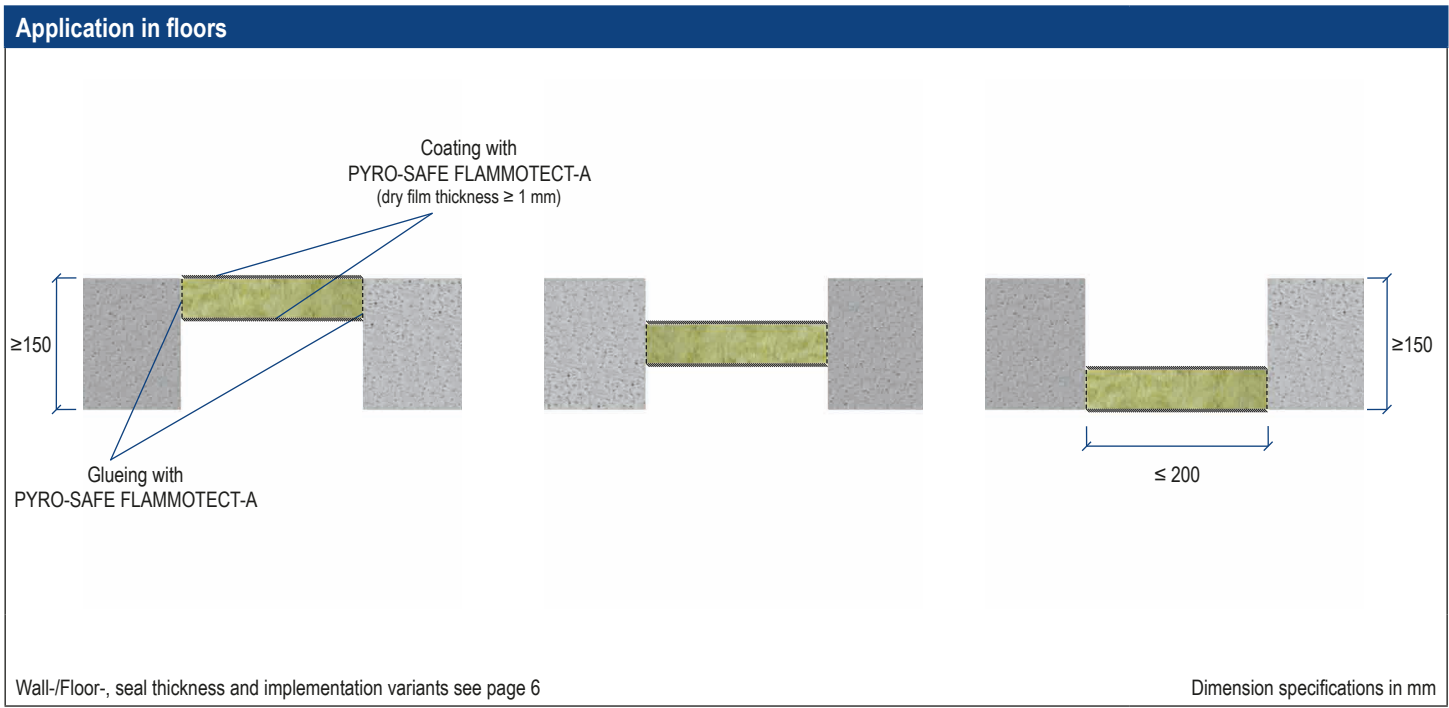
Dimension specifications in mm

Subject to errors, misprints and modifications. All information corresponds to state-of-the-art technology and the version of standards applicable at the time of printing (06/2018).  
 On request, we would be happy to inform you about the legal and technical framework or the manufacturer's specifications applicable in your individual case. © Copyright svt Group, Seevetal.  
 PYRO-SAFE is a registered trademark © of the svt Group, Seevetal.

# PYRO-SAFE FLAMMOTECT-A Joint sealing

## 4.2 Application with mineral fibre boards – single-layer: EI 60 / E 120

- The maximum joint width is  $\leq 200$  mm.
- As shown below, the mineral fibre boards (thickness  $\geq 50$  mm) can be installed in the middle, upper/left or lower/right seal edge.
- Joints can be placed in floors.
- The mineral fibre boards have to be glued in the structural element with PYRO-SAFE FLAMMOTECT-A, any remaining gaps shall be closed with loose mineral wool.
- The outer edges of the mineral fibre boards shall be coated with PYRO-SAFE FLAMMOTECT-A (dry film thickness  $\geq 1$  mm).



Subject to errors, misprints and modifications. All information corresponds to state-of-the-art technology and the version of standards applicable at the time of printing (06/2018). On request, we would be happy to inform you about the legal and technical framework or the manufacturer's specifications applicable in your individual case. © Copyright svt Group, Seevetal. PYRO-SAFE is a registered trademark © of the svt Group, Seevetal.

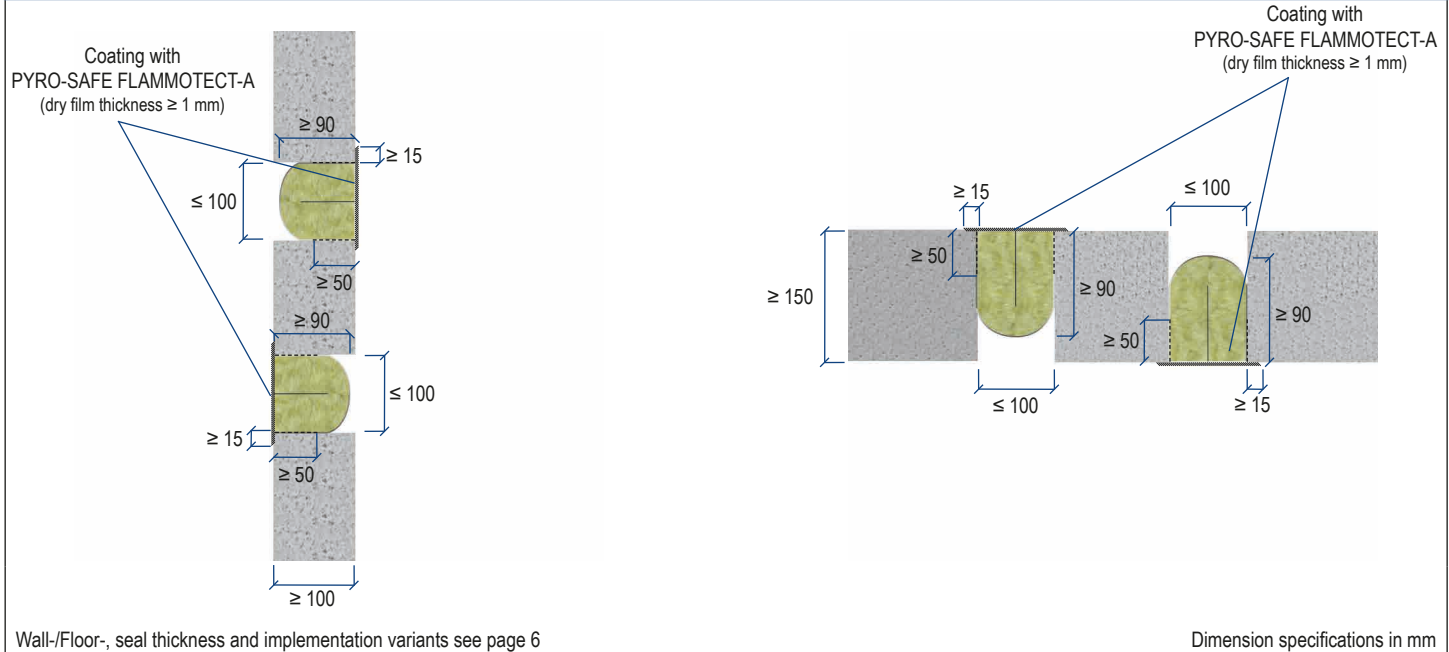


# PYRO-SAFE FLAMMOTECT-A Joint sealing

## 4.3 Application with lamella mat

- The maximum joint width is  $\leq 100$  mm, the sealing depth shall be at least 90 mm.
- The lamella mat's thickness shall be the same as the width of the joint. (If joint width = 100 mm, then Lamella mat's thickness = 100 mm)
- Joints can take place horizontally and vertically between walls, floors or between walls and floors.
- The lamella mat shall be folded in a U-shape (with the aluminium facing outside) and have to be coated with PYRO-SAFE FLAMMOTECT-A to a depth of  $\geq 50$  mm. The coating serves as an adhesive and the lamella mat can be glued into the structural element.
- The open side of the lamella mat and  $\geq 15$  mm all around have to be coated with PYRO-SAFE FLAMMOTECT-A (dry film thickness  $\geq 1$  mm).
- The lamella mat may be installed flush-fitting or immersed. If installed immersed, the inner surfaces of the structural element also have to be coated (dry film thickness  $\geq 1$  mm).

### Application in walls and floors



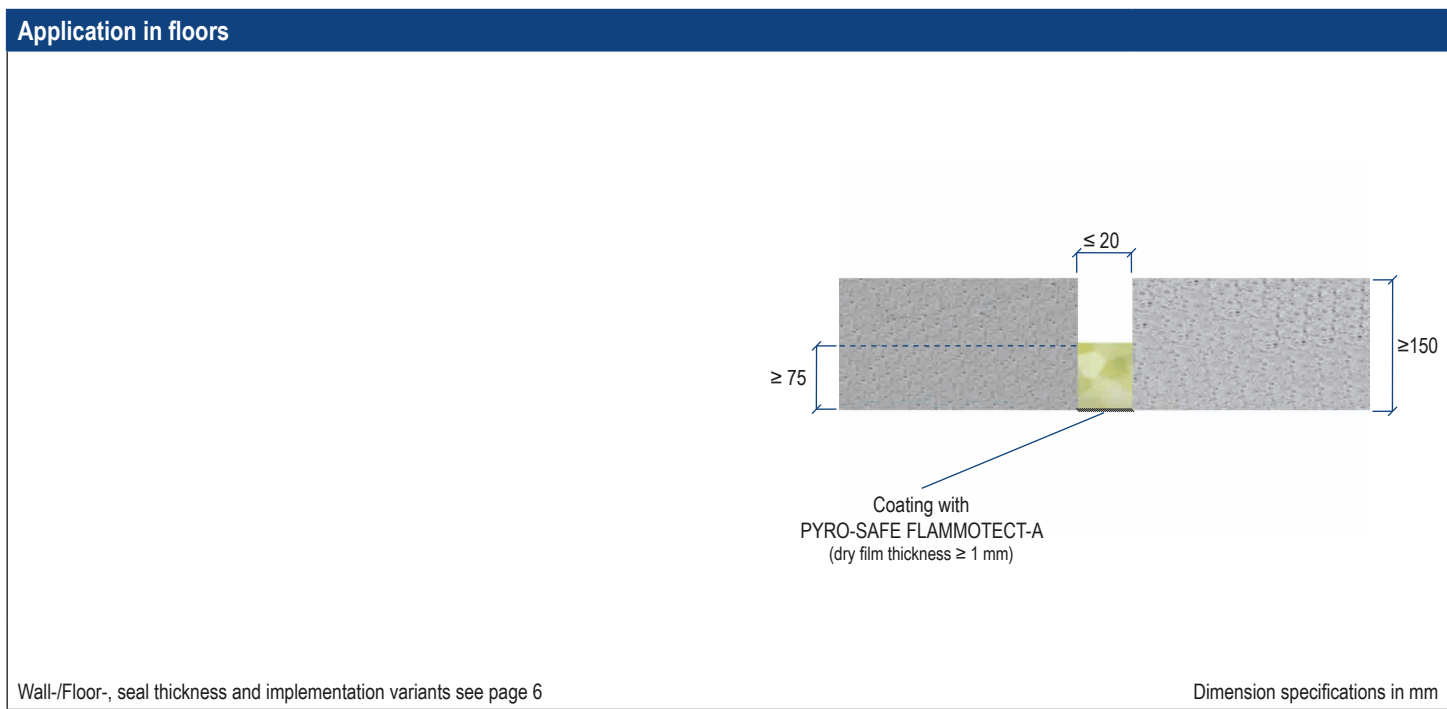
Subject to errors, misprints and modifications. All information corresponds to state-of-the-art technology and the version of standards applicable at the time of printing (06/2018).  
 On request, we would be happy to inform you about the legal and technical framework or the manufacturer's specifications applicable in your individual case. © Copyright svt Group, Seevetal.  
 PYRO-SAFE is a registered trademark © of the svt Group, Seevetal.

Wall-/Floor-, seal thickness and implementation variants see page 6

# PYRO-SAFE FLAMMOTECT-A Joint sealing

## 4.4 Application with loose mineral wool

- The maximum joint width is  $\leq 20$  mm, the sealing depth shall be at least 75 mm.
- Joints can be placed in floors.
- The surface has to be coated with PYRO-SAFE FLAMMOTECT-A (dry film thickness  $\geq 1$  mm).

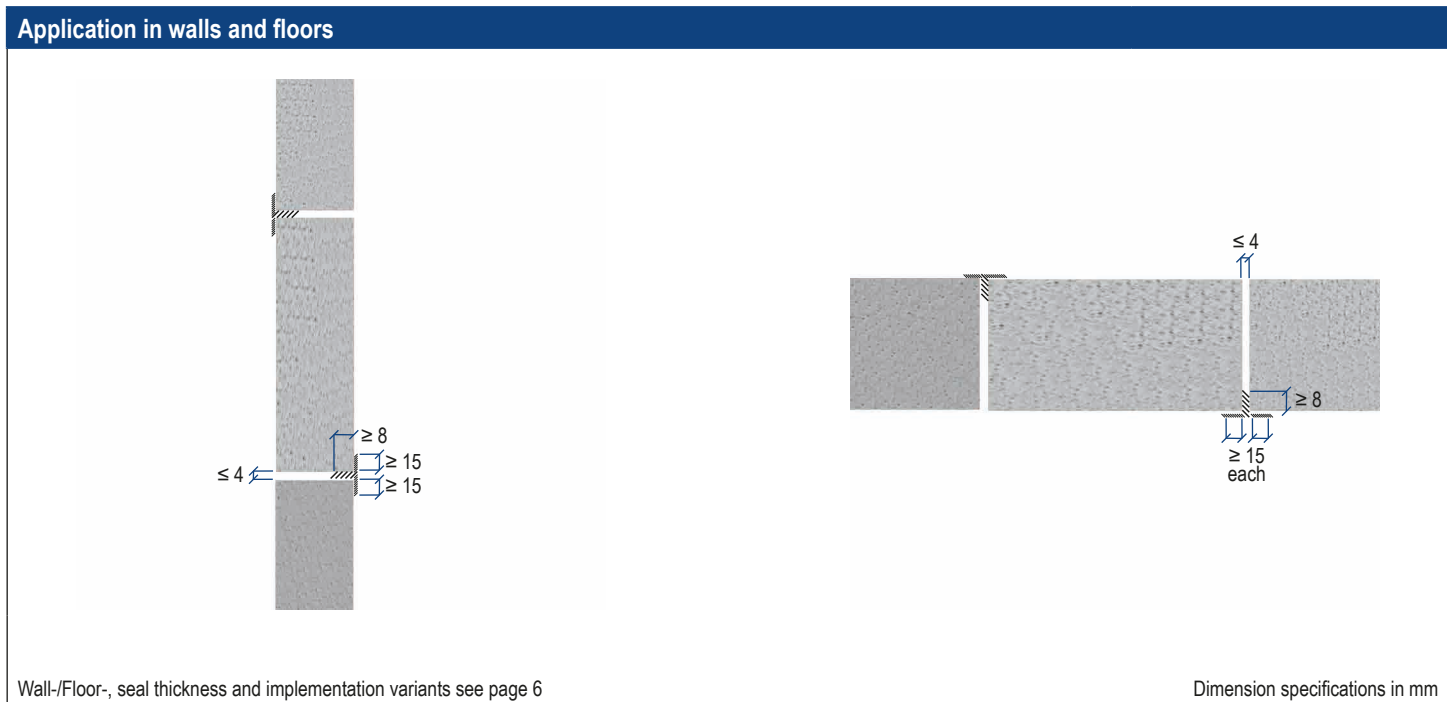


Subject to errors, misprints and modifications. All information corresponds to state-of-the-art technology and the version of standards applicable at the time of printing (06/2018).  
On request, we would be happy to inform you about the legal and technical framework or the manufacturer's specifications applicable in your individual case. © Copyright svt Group, Seevetal.  
PYRO-SAFE is a registered trademark © of the svt Group, Seevetal.

# PYRO-SAFE FLAMMOTECT-A Joint sealing

## 4.5 Application with fire protection filler

- The maximum joint width is  $\leq 4$  mm.
- Joints can take place horizontally and vertically between walls, floors or between walls and floors.
- The joint has to be filled to a depth of  $\geq 8$  mm and all around  $\geq 15$  mm with PYRO-SAFE FLAMMOTECT-A Filler.

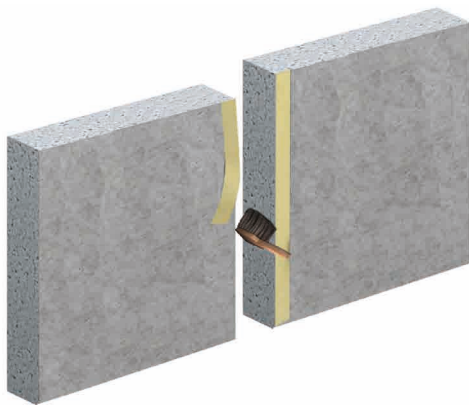


Subject to errors, misprints and modifications. All information corresponds to state-of-the-art technology and the version of standards applicable at the time of printing (06/2018). On request, we would be happy to inform you about the legal and technical framework or the manufacturer's specifications applicable in your individual case. © Copyright svt Group, Seevetal. PYRO-SAFE is a registered trademark © of the svt Group, Seevetal.

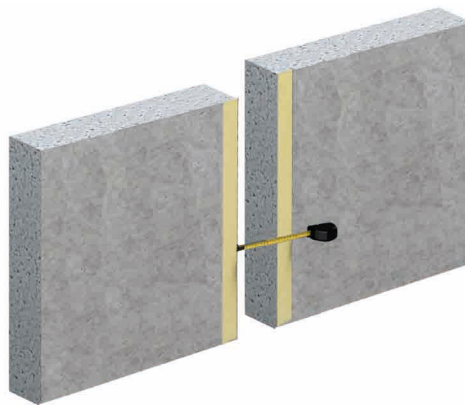
## PYRO-SAFE FLAMMOTECT-A Joint sealing

### 5. Installation steps for the application with mineral fibre boards

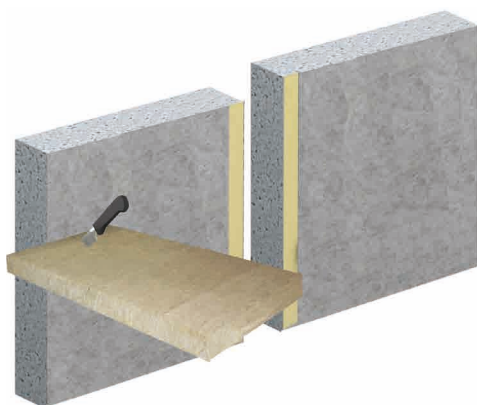
1. Clean the joints and cover surrounding surfaces of the joint with masking tape.



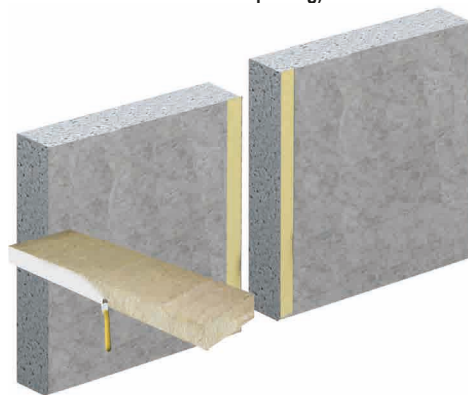
2. Measure the joints.



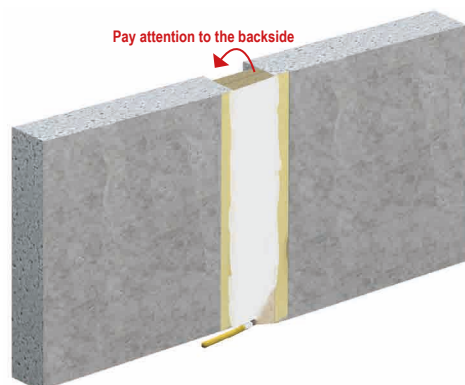
3. Cut mineral fibre boards according to the joint dimensions.



4. Coat the edges of the mineral fibre boards with PYRO-SAFE FLAMMOTECT-A and place them in one or two layers inside of the structural element.  
(Depending on the accessibility, the backside of the mineral fibre board can also be coated before placing)



5. Coating of the mineral fibre boards front and backside with PYRO-SAFE FLAMMOTECT-A.  
(Dry film thickness  $\geq 1$  mm)



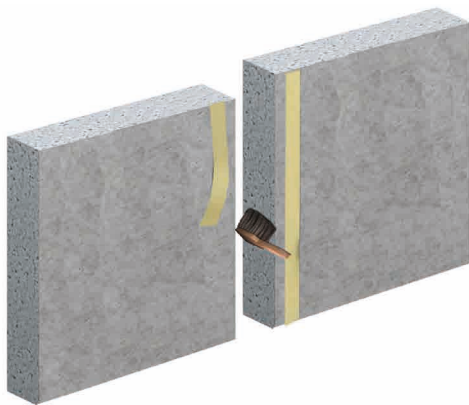
6. Remove the masking tape and - if necessary - install a label.



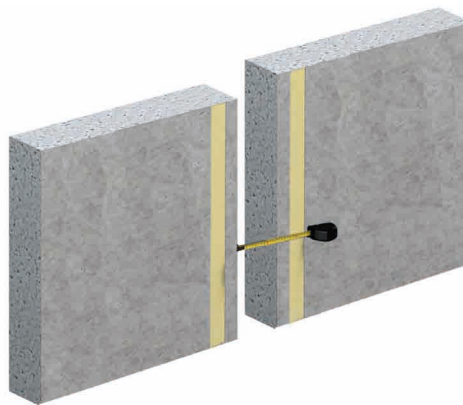
# PYRO-SAFE FLAMMOTECT-A Joint sealing

## 6. Installation steps for the application with lamella mat

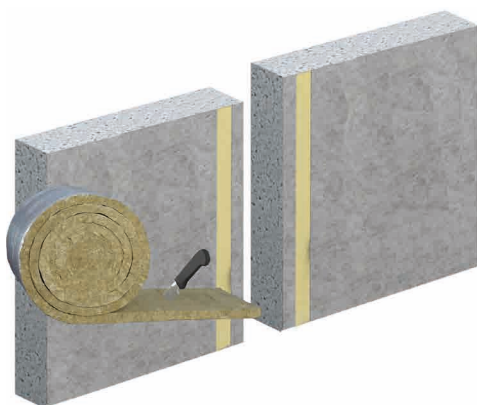
1. Clean the joints and cover surrounding surfaces with a distance of  $\geq 15$  mm to the edges of the joint with masking tape.



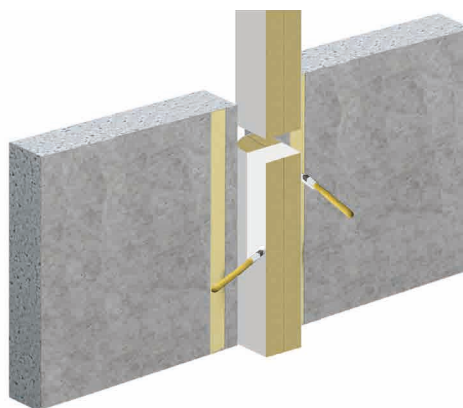
2. Measure the joints.



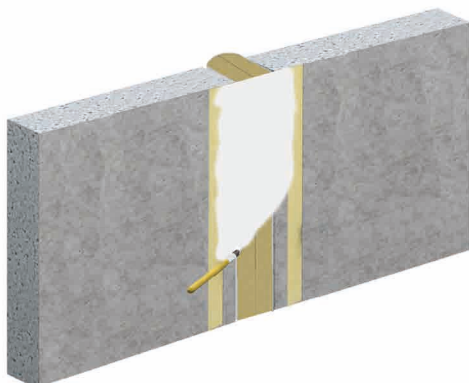
3. Cut the lamella mat according to the joint dimensions.



4. Fold the lamella mat in a U-shape. Coat both sides with PYRO-SAFE FLAMMOTECT-A to a depth of  $\geq 50$  mm and place it in the joint.



5. Coat the whole surface of the lamella mat and the structural element ( $\geq 15$  mm each side) with PYRO-SAFE FLAMMOTECT-A. (Dry film thickness  $\geq 1$  mm)



6. Remove the masking tape and - if necessary - install a label.

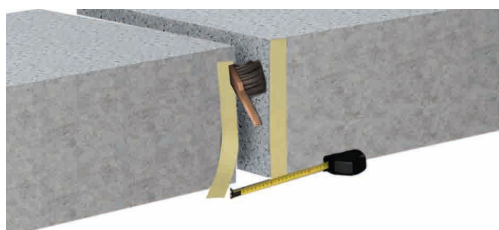


Subject to errors, misprints and modifications. All information corresponds to state-of-the-art technology and the version of standards applicable at the time of printing (06/2018). On request, we would be happy to inform you about the legal and technical framework or the manufacturer's specifications applicable in your individual case. © Copyright svt Group, Seevetal. PYRO-SAFE is a registered trademark © of the svt Group, Seevetal.

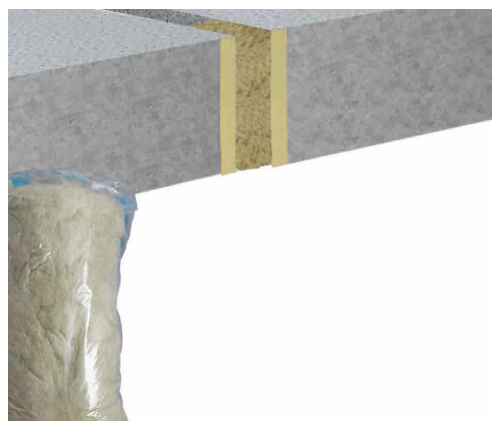
# PYRO-SAFE FLAMMOTECT-A Joint sealing

## 7. Installation steps for the application with mineral wool

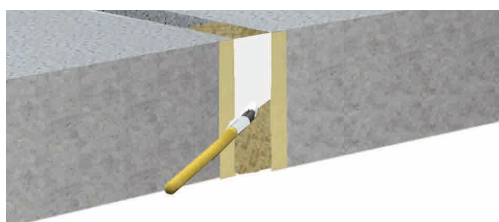
1. Clean the joints, measure them and cover surrounding surfaces with masking tape.



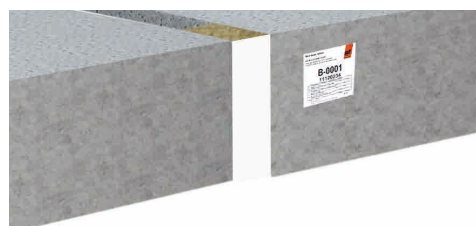
2. Fill the joints with mineral wool.



3. Coat the surface of the mineral wool with PYRO-SAFE FLAMMOTECT-A. (Dry film thickness  $\geq 1$  mm)



4. Remove the masking tape and - if necessary - install a label.

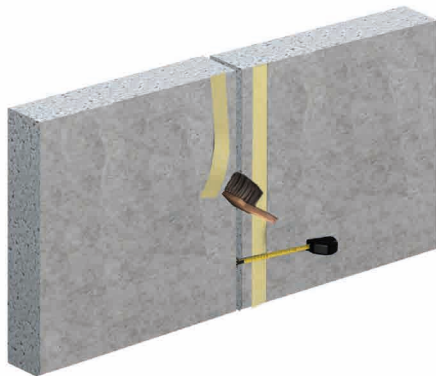


Subject to errors, misprints and modifications. All information corresponds to state-of-the-art technology and the version of standards applicable at the time of printing (06/2018).  
On request, we would be happy to inform you about the legal and technical framework or the manufacturer's specifications applicable in your individual case. © Copyright svt Group, Seevetal.  
PYRO-SAFE is a registered trademark © of the svt Group, Seevetal.

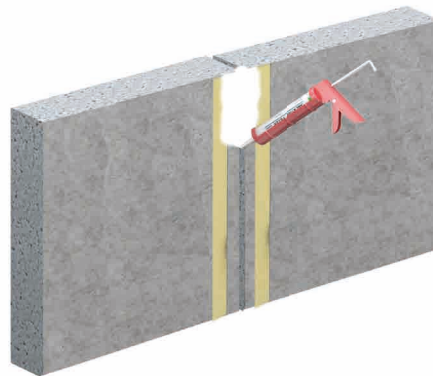
# PYRO-SAFE FLAMMOTECT-A Joint sealing

## 8. Installation steps for the application with fire protection filler

1. Clean the joints, measure them and cover surrounding surfaces with a distance of  $\geq 15$  mm to the edges of the joint with masking tape.



2. Seal the joints to a depth of  $\geq 8$  mm and an overlap of  $\geq 15$  mm with PYRO-SAFE FLAMMOTECT-A Filler.



3. Remove the masking tape and - if necessary - install a label.



Subject to errors, misprints and modifications. All information corresponds to state-of-the-art technology and the version of standards applicable at the time of printing (06/2018). On request, we would be happy to inform you about the legal and technical framework or the manufacturer's specifications applicable in your individual case. © Copyright svt Group, Seevetal. PYRO-SAFE is a registered trademark © of the svt Group, Seevetal.



**Declaration of Performance**  
**N° 01155-PYRO-SAFE-FLAMMOTECT-A**  
**PYRO-SAFE FLAMMOTECT-A**

Date: 26.10.2018  
 Rev. 04  
 Page 1 of 1

*Unique identification code of the product type*  
**PYRO-SAFE FLAMMOTECT-A**

*Intended use:*

- A) Ablative fire stopping product used in penetration seals**
- B) Fire stopping product used for linear joint and gap sealing**

*Producer*

**svt Brandschutz Vertriebsgesellschaft mbH International**  
**Gluesinger Strasse 86 • D - 21217 Seevetal • Germany**

*System for assessing and verifying constancy of performance*

**A) + B) System 1**

*European Assessment Document*

- A) ETAG 026-2:2011**
- B) EAD 350141-00-1106**

*European Technical Assessment*

- A) ETA-14/0418 vom 04.12.2014**
- B) ETA-18/0237 vom 16.05.2018**

*certificate of constancy of performance*

- A) 0761-CPR-0426**
- B) 0761-CPR-0726**

*Technical Assessment Body*

- A) Deutsches Institut für Bautechnik (DIBt), Berlin**
- B) ETA-Danmark A/S**

*The notified body*

**A) + B) Materialprüfanstalt für das Bauwesen Braunschweig, Kennnummer 0761**

*Declared performance*

	Essential characteristics	Performance	Harmonised technical specification
A) + B)	Reaction to fire	<b>Class E</b>	EN 13501-1
A)	Fire resistance	Class EI 30 - Class EI 240 for details check ETA-14/0418	EN 13501-2
B)		Maximum Class EI 120-H-X-B-W-00 up to 200 Class EI 120-V-X-B-W-00 up to 200 for details check ETA-18/0237	
A)	Emission of dangerous substances	no dangerous substances	ETAG 026-2
A) + B)	Durability and serviceability	Use category type X	EOTA TR 024/ EAD 350141-00-1106

The performance of the product identified above is in conformity with the set of declared performances. This declaration of performance is issued, in accordance with Regulation (EU) No. 305/2011, under the sole responsibility of the manufacturer identified above. DoP online available at [www.svt.de](http://www.svt.de).

Signed for and on behalf of the manufacturer by:

i.V. Christian Meyer-Korte  
 Head of Product Management

i.V. Andree Schober  
 Head of chemical department