



## **DDL® Ring-Seal Lu-GT** Modular seal inserts

# *Ring-Seal*



**DDL®**

Durchführungstechnik  
Dichtsysteme  
Lutz

**web** [www.ddl-dichttechnik.de](http://www.ddl-dichttechnik.de)  
**phone** (+49) 07153 61093-0  
**fax** (+49) 07153 61093-029  
**mail** [vertrieb@ddl-dichttechnik.de](mailto:vertrieb@ddl-dichttechnik.de)

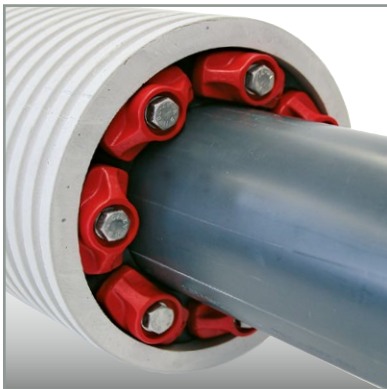
# DDL modular ring seals Lu-GT

with the original **DDL**® Ring-Seal modular seal

## Installation in core-drilled holes



## Installation in wall sleeves



## Installation wall sleeves/cable conduits



# DDL Ring-Seal building penetrations and seal inserts

If pipelines or cables are led through underground or aboveground external walls, ceilings, or in cable conduits, it has to be ensured that the penetration spots are permanently sealed. Neither pressing water nor gas may enter the penetration or the seal of the conduit.

Building penetrations and seal inserts enable a simple, fast and neat penetration of pipelines and cables through walls, ceilings, and conduits. The seal inserts are pressure-tight and prevent the transmission of heat and sound.



- Sealing of pipes and cables against pressing water and gas
- Sealing of pipes and cables against aggressive mediums
- Sealing of pipelines in drinking water facilities
- For use in sound protection in accordance with DIN 4109
- Subsequent installation possible (all seal inserts can be separated)

# Product assets of the DDL Ring-Seal Lu-GT modular seal

Gap-free fork connection



Connecting elements with corrosion protection



Revolving AquaStop safety groove



Non-twisting pressure elements



Quick and simple to split



# DDL Ring-Seal Lu-GT product overview

Lu-GT 20



Simple seal insert against pressing water up to 20 mWs and 2 bar air or water pressure in accordance with DIN 3230 part5

Lu-GT 50



Simple seal insert against pressing water up to 50 mWs and 5 bar air or water pressure in accordance with DIN 3230 part5

Lu-GT epdm



Standard rubber highly resistant to many common fluids, for temperatures from -40° to +120° C

Lu-GT nbr



Nitrile rubber resistant to oils, fats, fuels (aromatic) and many kinds of solvents, not UV-/weather-resistant, for temperatures from -40° to +120° C

Lu-GT ktw



All materials comply with the German Environmental Agency's recommendations about materials coming into contact with drinking water, for temp. from -40° to +120° C

Lu-GT vz



Galvanized steel parts

Lu-GT va



Stainless steel parts  
V2A + V4A

# Schematic installation examples of DDL Ring-Seal seal inserts and building penetrations

Lu-GT 20



Lu-GT 50

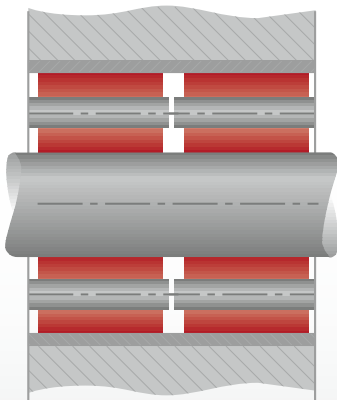


Lu-GT (separable)



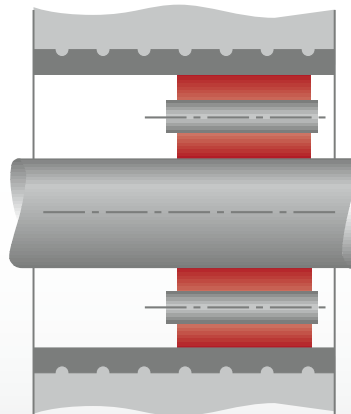
## examples of installation

core-drilled hole



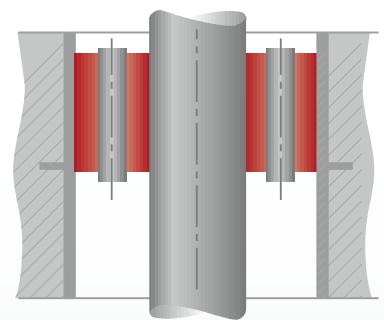
wall installation in core-drilled hole with 2 external seal inserts

wall sleeve



wall installation with external seal insert on one side

ceiling



ceiling installation with one external seal insert

# Modular ring seal original DDL Ring-Seal Lu-GT 20

## Modular construction system

Lu-GT selection software  
[www.ddl-auswahl24.de](http://www.ddl-auswahl24.de)  
[www.ddl-select24.com](http://www.ddl-select24.com)



### 20 m WS

#### Dimensions for installation

Item name	Annular gap [mm]	Carrier pipe [mm]	Installation depth [mm]	Max. torque [Nm]
Lu-GT 200	12,5 – 15,9	21,3 – 323,9	40	3
Lu-GT 250	15,5 – 19,6	13,0 – 358,0	40	3
Lu-GT 275	15,5 – 19,6	4,0 – 67,1	40	3
Lu-GT 300	17,5 – 22,4	44,5 – 406,4	55	15
Lu-GT 325	23,0 – 29,8	88,9 – 711,0	80	15
Lu-GT 350	23,5 – 30,6	14,0 – 406,4	60	15
Lu-GT 375	31,0 – 36,5	26,0 – 323,9	70	15
Lu-GT 400	36,0 – 43,5	139,7 – 1220,0	90	35
Lu-GT 415	36,0 – 43,5	44,5 – 323,9	90	35
Lu-GT 425	28,0 – 35,5	134,0 – 1220,0	90	35
Lu-GT 475	40,0 – 47,5	33,7 – 1220,0	90	35
Lu-GT 500	58,0 – 68,5	82,5 – 1220,0	110	65
Lu-GT 525	53,0 – 61,3	133,0 – 1220,0	110	65
Lu-GT 575	47,0 – 56,8	90,0 – 1220,0	90	50
Lu-GT 600	80,0 – 96,5	177,8 – 3000,0	140	130
Lu-GT 650	71,0 – 81,5	200,0 – 1220,0	110	85

# Modular ring seal original DDL Ring-Seal Lu-GT 50 Modular construction system

Lu-GT selection software  
[www.ddl-auswahl24.de](http://www.ddl-auswahl24.de)  
[www.ddl-select24.com](http://www.ddl-select24.com)



## 50 m WS

### Dimensions for installation

Item name	Annular gap [mm]	Carrier pipe [mm]	Installation depth [mm]	Max. torque [Nm]
Lu-GT 200	12,5 – 17,0	21,3 – 323,9	70	3
Lu-GT 250	15,5 – 21,0	13,0 – 358,0	70	3
Lu-GT 275	15,5 – 21,0	4,0 – 67,1	70	3
Lu-GT 300	17,5 – 24,0	44,5 – 406,4	90	15
Lu-GT 325	23,0 – 32,0	88,9 – 711,0	110	15
Lu-GT 350	23,5 – 33,0	14,0 – 406,4	110	15
Lu-GT 375	31,0 – 40,0	26,0 – 323,9	110	15
Lu-GT 400	36,0 – 46,0	139,7 – 1220,0	140	35
Lu-GT 415	36,0 – 46,0	44,5 – 323,9	140	35
Lu-GT 425	28,0 – 38,0	134,0 – 1220,0	140	35
Lu-GT 475	40,0 – 50,0	33,7 – 1220,0	140	35
Lu-GT 500	58,0 – 72,0	82,5 – 1220,0	150	65
Lu-GT 525	53,0 – 64,0	133,0 – 1220,0	150	65
Lu-GT 575	47,0 – 60,0	90,0 – 1220,0	140	50
Lu-GT 600	80,0 – 102,0	177,8 – 3000,0	190	130
Lu-GT 650	71,0 – 85,0	200,0 – 1220,0	160	85



## Accessories

### Wall sleeves



Polymer-quartz-sand cement wall sleeves made of asbestos-free polymer-quartz-sand cement.

The grooved shape (water stop), the dimensioning and the dimensional tolerance of the wall sleeves accord with the works standard of one of the biggest German water suppliers.

**Features:**

with creasing on the external wall (grooves) for additional protection against water penetration

**Dimensions:**

- DN 80 to DN 1200
- length 100 to 1000 mm
- also available in split version

### Front wall sealing



Steel constructions according to DIN 18195 T9 made of stainless steel for waterproofing buildings.

**Features:**

- front flange (front wall sleeve)
- with loose/fixed flange
- split and closed versions available
- multiple penetrations available

### Concrete finish for core-drilled holes



Waterproof coating of core-drilled holes

- two-component epoxy resin
- solvent-free
- for dry concrete/mineral substrate
- unfilled low-viscosity epoxy resin
- universally applicable

**Application range:**

Any type of concrete, screed or stone (optionally KTW-compliant)

Everything  
under one roof

Planning

Development

Construction

Manufacture

Assembly

Delivery

Made in Germany

our customer service

Competence

Price

Quality

Delivery time

## ... more products from our portfolio

- Pipe-Seal compact seals
- Wall collars
- Casing end seals
- Polymer-quartz-sand cement wall sleeves
- Casing spacers
- Rubber steel flange seals
- Rubber flat seals
- Sani-Pipe (plastic front flange)
- Double sleeve penetrations with sealing collar
- Seal packings DSP 150 (cable penetrations)
- BEF Snap-In (elastic container entry)
- Steel constructions according to DIN 18195 T9



# DDL<sup>®</sup>

Durchführungstechnik  
Dichtsysteme  
Lutz

**web** [www.ddl-dichttechnik.de](http://www.ddl-dichttechnik.de)  
**phone** (+49) 07153 61093 0  
**fax** (+49) 07153 61093 029  
**mail** [vertrieb@ddl-dichttechnik.de](mailto:vertrieb@ddl-dichttechnik.de)

... we set standards!

