

# FLIP BOPLAN PLINTH SPECIFICATION SHEET

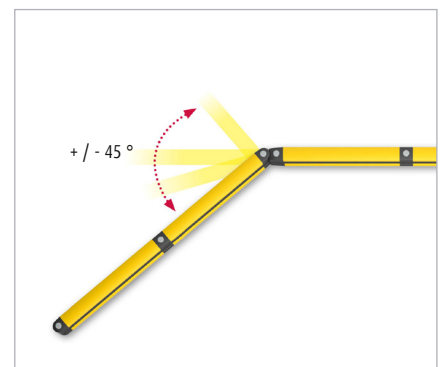
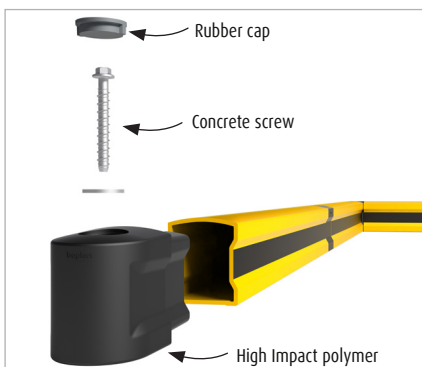
Revision: 10 August 2021 4:05 PM  
Boplan reference: PL1800 ...



APPLICATION	
Environment	<b>Ground level protection</b> - Wall protection (refrigerator walls, decorative walls, sandwich panels) - Wheel guide for pallet trucks or trolleys in busy traffic lanes - Protection of machines and infrastructures - Below a Boplan traffic barrier system - Indoor and outdoor use - Food industry
Impact performance at 90° (in Joule)	Post: 2100 Joule (Eq. to 2,5 ton - 4,6 km/h)
	Rail: 2100 Joule (Eq. to 2,5 ton - 4,6 km/h)
MATERIAL	
Connection pieces / Rails	<b>High impact Polyolefin</b> - UV resistant - Fire class E <sup>0</sup> - Non conductive - Impervious to most chemicals <sup>**</sup>
Cap / Seal	<b>Rubber</b> - UV resistant - Fire class E <sup>0</sup> - Non conductive - Impervious to most chemicals <sup>**</sup>
STANDARD COLORS	
Connection pieces	Black
Rail	Yellow / Black (Bi-color)

\*Classification according to EN 13501-1:2007 +A1:2009 - Fire classification of construction products and building elements.  
 \*\*Ask your local sales office for resistance to specific chemicals.

		FIXATIONS	
		ZC (Zinc coated)	SS (Stainless steel)
STANDARD	Concrete screw	 Ø17mm x 135mm	Not available
	Anchor rod (Chemical)	 M16 x 120mm + Chemical resin	Not available
ALTERNATIVES	Asphalt anchor	 Bolt M16 x 100mm + Screw Ø22mm	Not available



## FEATURES AND FUNCTIONALITY

SIZE	
Height	180 mm
Profile section	180 mm x 150 mm (10 mm thick)
Standard rail length	see next page

REQUIREMENTS	
Compatibility	Below TB 400 / TB400 Plus / HP Plus - ...
Floor	Industrial concrete, flat surface
Concrete quality	minimum C25/30
Concrete floor plate thickness (mm)	minimum 150
Operational temperature	-10°C up to +40°C
Water and humidity	<b>Zinc coated fixations:</b> indoor and outdoor use in most environments

### IMPACT LABEL FOR SAFETY BARRIERS

BOPLAN FLIP		
IMPACT RATING	45°	90° <small>PAS 13:2017 compliant</small>
E80 < 80 kJ		
E60 < 60 kJ		
E50 < 50 kJ		
E40 < 40 kJ		
E35 < 35 kJ		
E30 < 30 kJ		
E25 < 25 kJ		
E20 < 20 kJ		
E15 < 15 kJ		
E10 < 10 kJ		
E5 < 5,0 kJ	3,0 kJ	
E2 < 2,5 kJ		2,1 kJ

**TEST CONDITIONS**

TEMPERATURE: 20°C  
 IMPACT HEIGHT: 90 mm  
 IMPACT ANGLE: 90°  
 TEST FLOOR: CONCRETE C25/30 - 160 mm  
 MANUFACTURER ANCHOR PULL OUT: 27,8 kN

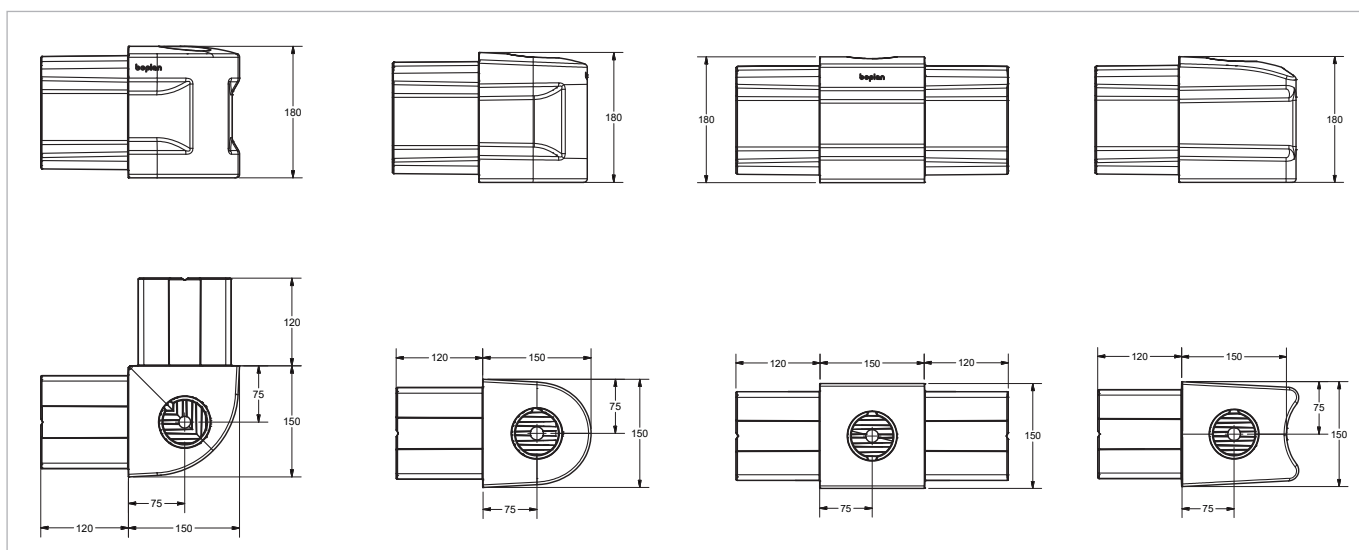
**TEST VEHICLE**

WEIGHT: 2300 KG  
 TYPE: COMMERCIAL FORK LIFT  
 SIZE (L x W x h): 1890 x 1020 x 1970 mm  
 CONTACT AREA: STEEL BUMPER WIDTH: 600 mm

**BOPLAN TEST LAB**

Muizelstraat 12  
 8560 Moorsele  
 Belgium

**SUCCESS CRITERIA** VEHICLE STOPPED - ASI (ACCELERATION SEVERITY INDEX) < 0.5



**REFERENCE LIST - FLIP**

CONNECTION PIECES		
Endpost	PL1800-0001-EPBL	
Midpost	PL1800-0001-MPBL	
Corner post 90°	PL1800-0001-CPBL	
Universal corner post	PL1800-0001-UCBL	

RAIL SETS			
	Rail length	CC length	Reference
Standard rail	700 mm	850 mm	PL1800-0700-0001YB
Standard rail	800 mm	950 mm	PL1800-0800-0001YB
Standard rail	900 mm	1050 mm	PL1800-0900-0001YB
Standard rail	1000 mm	1150 mm	PL1800-1000-0001YB
Standard rail	1100 mm	1250 mm	PL1800-1100-0001YB
Standard rail	1200 mm	1350 mm	PL1800-1200-0001YB
Standard rail	1300 mm	1450 mm	PL1800-1300-0001YB
Standard rail	1400 mm	1550 mm	PL1800-1400-0001YB
Standard rail	1500 mm	1650 mm	PL1800-1500-0001YB
Standard rail	1600 mm	1750 mm	PL1800-1600-0001YB
Standard rail	1700 mm	1850 mm	PL1800-1700-0001YB
Standard rail	1800 mm	1950 mm	PL1800-1800-0001YB
Standard rail	1900 mm	2050 mm	PL1800-1900-0001YB
Standard rail	2000 mm	2150 mm	PL1800-2000-0001YB
Non Std rail	300 -1299 mm	450 - 1449 mm	PL1801-1449-0001YB
Non Std rail	1301-1999 mm*	1451 - 2149 mm*	PL1801-2149-0001YB

\* The impact performance has not been tested for tube lengths >1500 mm. Only use longer lengths for non - critical applications.

